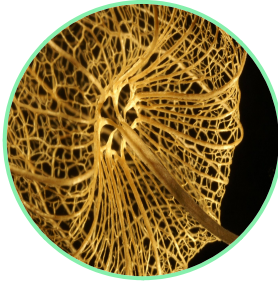


FarmLens Ltd

Website: farmlens.africa | App: app.farmlens.africa | Headquarters: Nairobi, Kenya



Crop details

Gooseberry

Physalis peruviana

Family: Solanaceae

Categories

Fruits & Nuts

Generated: 2026-04-11 06:40

Quick stats

Family	Solanaceae
Typical harvest	8.0 t/ha
Varieties	1
Pests and diseases	2
Seasons	1

Crop profile

Growth habit	shrub
Days to harvest	180
Main uses	Small golden fruit for fresh eating, jam, and garnish markets.
Pollination	insect
Origin and where it grows	Common as cape gooseberry in cool highland horticultural systems.

Weather, soil and spacing

Best temperature	14 - 24 °C
Rainfall	800 - 1600 mm/yr
Altitude	0 - 2600 m
Best pH	6 - 7
Soil type	Deep, fertile, well-drained soil with good organic matter.
Row spacing	500 cm
Plant spacing	500 cm
Planting depth	30 cm
Seed rate	kg/ha (check local recommendation)
Nursery days	180

Simple notes for farmers

About the crop: This crop has a growth habit described as "shrub". Harvest typically starts about 180 days after planting.

Main use: Farmers mostly grow this crop for small golden fruit for fresh eating, jam, and garnish markets..

Pollination: Mainly insect; healthy flowers and pollinators improve fruit set.

Where it grows: Common as cape gooseberry in cool highland horticultural systems.. Grouped under: Fruits & Nuts.

Best climate: 14 - 24 °C; 800 - 1600 mm/yr; up to about 2600 m a.s.l.

Soil: Best at pH 6 - 7; deep, fertile, well-drained soil with good organic matter..

Farmer guide (Mwongozo wa Mkulima)

<u>Planting</u>	Plant healthy Gooseberry seedlings or grafted plants at onset of rains in prepared pits.
<u>Transplanting</u>	Handle Gooseberry rootballs carefully and water well after planting.
<u>Irrigation</u>	Maintain steady moisture during establishment and fruit development of Gooseberry.
<u>Fertigation</u>	Split nutrients through active growth and fruit development in Gooseberry.
<u>Pest scouting</u>	Scout Gooseberry regularly for fruit flies, scales, borers, and foliar diseases.
<u>Pruning and training</u>	Prune Gooseberry to maintain canopy light, height, and sanitation.
<u>Harvest</u>	Harvest Gooseberry at the right maturity stage for fresh-market quality.
<u>Postharvest</u>	Keep Gooseberry shaded and cool after harvest to preserve market quality.

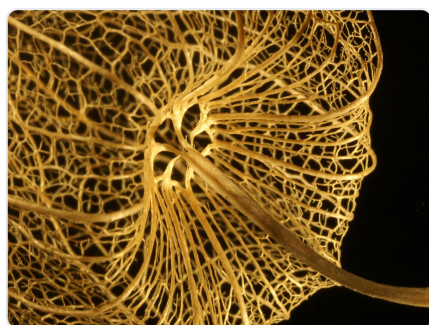
Nutrient schedule (Mbolea kwa Hatua)

<u>#</u>	<u>Stage</u>	<u>DAP</u>	<u>Product</u>	<u>Rate</u>	<u>Targets (kg/ha)</u>	<u>Notes</u>
1	Planting or season start	0	Well-rotted manure	8000 kg/ha	N: N/A, P?O?: N/A, K?O: N/A	Improve rooting environment for Gooseberry.
2	Pre-fruiting	90	NPK 17-17-17	200 kg/ha	N: 34, P?O?: 34, K?O: 34	Balanced nutrient support for Gooseberry.

Nutrient requirements

<u>Nutrient</u>	<u>Stage</u>	<u>Amount</u>	<u>Unit</u>
N	Basal	40	kg/ha
P?O?	Basal	30	kg/ha
K?O	Basal	40	kg/ha
N	Fruiting	40	kg/ha
K?O	Fruiting	50	kg/ha

Field images



Varieties

<u>Name</u>	<u>Country</u>	<u>Maturity (days)</u>	<u>Traits</u>
Cape Gooseberry	KE	180	Papery-husked fruit for fresh and processed markets.

Fertilizer recommendations

<u>Stage</u>	<u>Product</u>	<u>Rate</u>	<u>Notes</u>
Planting	Well-rotted manure	8000	Organic matter for Gooseberry establishment.
Pre-fruiting	NPK 17-17-17	200	Balanced fertilizer ahead of major Gooseberry crop load.

Pests and diseases

<u>Name</u>	<u>Type</u>	<u>Symptoms</u>	<u>Management</u>
Fruit flies	pest	Stings, larval feeding, and rotting fruits.	Field sanitation, trapping, and timely harvest.
Anthraxnose and fruit rots	disease	Lesions on flowers, leaves, or fruits reducing quality.	Prune for airflow, keep orchards clean, and protect during wet periods.

Yields

<u>System</u>	<u>Typical</u>	<u>Min</u>	<u>Max</u>	<u>Notes</u>
Managed orchard production	8	4.8	12.8	Typical orchard yield for Gooseberry under practical management.

Season calendars

<u>Country</u>	<u>Region</u>	<u>Planting</u>	<u>Harvest</u>
KE	Managed Orchard Zones	Mar-Apr or Oct-Nov	Depends on variety and agroecology

Region suitability

<u>Country</u>	<u>Region</u>	<u>Suitability</u>
KE	Managed Orchard Zones	Medium

Source: **FarmLens Ltd** - farmlens.africa and app.farmlens.africa. Headquarters: Nairobi, Kenya. This guide was generated from the FarmLens database.